

LOCALITY PLAN
NOT TO SCALE

Sheet List Table

SHEET NUMBER	SHEET TITLE
1	LOCALITY & NOTES
2	EXISTING CONDITIONS – 10 STEPS
3	DEMOLITION PLAN
4	DETAILS 1
5	DETAILS 2
6	SETOUT PLAN
7	EARTHWORK PLAN
8	CONSTRUCTION MANAGEMENT PLAN
9	EXISTING CONDITIONS – SITE 1
10	SITE 1 – DETAILS

NOTES:

GENERAL

- ALL LEVELS ARE TO AUSTRALIAN HEIGHT DATUM (AHD).
- ALL WORKS TO BE ACCURATELY SETOUT BEFORE COMMENCING EXCAVATION WORK.
- ALL WORKS TO BE CARRIED OUT IN ACCORDANCE WITH COUNCIL GENERAL SPECIFICATION AND LATEST ADOPTED VERSION OF THE INFRASTRUCTURE DESIGN MANUAL, RELEVANT AUSTRALIAN STANDARDS AND VICROADS STANDARD SPECIFICATIONS.
- TEMPORARY BENCH MARKS (TBM) TO BE RE-ESTABLISHED BY A SUITABLY QUALIFIED SURVEYOR IF FOUND TO BE MISSING AT THE COMMENCEMENT OF CONSTRUCTION. THE CONTRACTOR WILL BE RESPONSIBLE FOR CARE AND MAINTENANCE OF TBM'S THEREAFTER.

TBM CODE	EASTING	NORTHING	ELEVATION
5221	733017.047	6086213.367	67.234
5222	733015.870	6086159.488	66.751
5223	733060.778	6086100.983	68.006

- ALL EXISTING SURFACE LEVELS SHOWN ON THE ENGINEERING DRAWINGS HAVE BEEN INTERPOLATED FROM A DIGITAL TERRAIN MODEL. THESE LEVELS HAVE BEEN USED AS THE BASIS FOR ALL ENGINEERING DESIGN AND DETERMINATION OF QUANTITIES AND ARE ACCURATE TO WITHIN ±0.05m.
- THE CONTRACTOR IS TO CARRY OUT WORK IN A SAFE MANNER IN ACCORDANCE WITH APPLICABLE LEGISLATION, STATUTORY REGULATIONS, BY-LAWS OR RULES. CONTRACTOR IS RESPONSIBLE FOR OCCUPATIONAL HEALTH AND SAFETY OF SITE PERSONNEL AND GENERAL PUBLIC IN ACCORDANCE WITH ALL CURRENT WORK HEALTH AND SAFETY ACTS, LEGISLATIVE REQUIREMENTS, ASSOCIATED REGULATIONS AND CODES OF PRACTICE, INDUSTRIAL AGREEMENTS AND ACCEPTED INDUSTRY PRACTICE.
- THE CONTRACTOR IS TO DEVELOP AND IMPLEMENT A DETAILED SAFE WORK METHOD STATEMENT OUTLINING THE CONSTRUCTION SEQUENCE AND METHODOLOGY FOR EACH WORK ACTIVITY FORMING THE PROJECT WORKS.
- THE CONTRACTOR SHALL BE RESPONSIBLE FOR MAINTAINING THE STRUCTURE IN A STABLE CONDITION AND ENSURING NO PART SHALL BE OVER STRESSED DURING CONSTRUCTION ACTIVITIES. THE CONTRACTOR SHALL PROVIDE A DETAILED SAFE WORK METHOD STATEMENT FOR ALL BUILDER'S WORKS NOT DETAILED ON THE DRAWINGS SUCH AS PROPPING, SHORING, TEMPORARY RETAINING, CONSTRUCTION SEQUENCING AND ERECTION PROCEDURES ETC.
- THE CONTRACTOR SHALL BE RESPONSIBLE FOR MAINTAINING STABILITY OF EXCAVATED FACES AND TRENCHES DURING CONSTRUCTION.
- WORKMANSHIP AND MATERIALS SHALL BE IN ACCORDANCE WITH THE RELEVANT AS/NZ CODES INCLUDING ALL AMENDMENTS AND THE LOCAL STATUTORY AUTHORITIES, EXCEPT WHERE VARIED BY THE CONTRACT DOCUMENTS.
- PRIOR TO COMMENCING ANY CONSTRUCTION WORKS, THE CONTRACTOR SHALL LOCATE AND DEPTH ALL EXISTING UNDERGROUND SERVICES IN VICINITY OF WORKS. ANY DISCREPANCIES OF DEPTH OR LOCATION FROM THAT INDICATED ON THESE DRAWINGS SHALL BE REPORTED TO THE SUPERINTENDENT. REPAIRS TO DAMAGED SERVICES CAUSED BY CONSTRUCTION WORKS SHALL BE AT THE CONTRACTORS COST.
- THESE DRAWINGS DO NOT DETAIL TEMPORARY WORKS. TEMPORARY WORKS ARE TO BE DESIGNED BY THE CONTRACTOR.
- THE FINISHED SURFACE SHALL BE EVENLY GRADED BETWEEN DESIGN SURFACE LEVELS.
- REINSTATE ALL AREAS OUTSIDE THE LIMIT OF WORKS THAT HAVE BEEN DISTURBED AS A RESULT OF THE CONSTRUCTION OF THE WORKS. REINSTATE TO EXISTING CONDITIONS PRIOR TO COMMENCEMENT OF WORKS.
- SUBMIT DETAILS OF PROPOSED CHANGES TO SCOPE, WORK METHODS OR MATERIALS, ETC. FOR APPROVAL BEFORE PROCEEDING. APPROVAL DOES NOT AUTHORISE A VARIATION TO THE CONTRACT.
- NECESSARY PERMITS AND APPROVALS FROM RELEVANT AUTHORITIES WILL BE PROVIDED BY PLANRIGHT BEFORE COMMENCING THE CONSTRUCTION WORK ON SITE. NOTIFY RELEVANT SERVICE AUTHORITIES BEFORE COMMENCING WORK ON SITE.
- GIVE TWO WORKING DAYS (48 HOURS) NOTICE AS A MINIMUM, SO THAT INSPECTION MAY BE MADE OF CRITICAL STAGES OF WORK.
- INSPECTIONS AND REVIEWS UNDERTAKEN BY SUPERINTENDENT OR OTHERS DO NOT RELIEVE CONTRACTOR OF RESPONSIBILITY FOR COMPLIANCE WITH DRAWINGS AND SPECIFICATIONS.
- IMPLEMENT SOIL AND WATER MANAGEMENT PROCEDURES TO AVOID EROSION, CONTAMINATION AND SEDIMENTATION OF SITE, SURROUNDING AREAS AND DRAINAGE SYSTEMS.
- EXISTING TREES NOT IDENTIFIED FOR REMOVAL SHALL BE PROTECTED DURING ALL CONSTRUCTION ACTIVITIES. METHOD OF PROTECTION SHALL BE IN ACCORDANCE WITH AS4970 AND SUBMITTED TO THE SUPERINTENDENT FOR APPROVAL.
- ANY IN SITU GROUND THAT IS LOOSENED, SOFTENED OR OTHERWISE DISTURBED BY THE EXCAVATION PROCESS OR BY EXPOSURE TO THE ELEMENTS SHOULD BE REMOVED AND REPLACED WITH COMPACTED STRUCTURAL FILL, OR ELSE SHOULD BE COMPACTED IN PLACE TO ACHIEVE A DENSITY NOT LESS THAN THAT OF THE SURROUNDING UNDISTURBED GROUND.

EARTHWORKS

- WHERE SHOWN ON THE DRAWINGS, THE DEPTH OF EXCAVATION SHALL ALLOW FOR FOUNDATION PREPARATION CONCRETE.
- EXCAVATION REQUIRED FOR THE PLACEMENT OF THE STRUCTURES SHALL INCLUDE THE REMOVAL OF ALL MATERIAL TO THE LENGTHS AND WIDTHS NECESSARY TO PERMIT THE ERECTION AND REMOVAL OF FORMWORK FOR FOOTINGS AND SUB STRUCTURES.
- ALL SOFT/DISTURBED SOILS TO BE REMOVED TO FIRM NATURAL GROUND.
- ALL FILL MATERIALS ARE SUBJECT TO SUPERINTENDENT APPROVAL PRIOR TO USE, AND SHALL NOMINALLY BE A CLEAN GRANULAR SOIL.
- THE METHOD OF EXCAVATION, TRANSPORTATION, DEPOSITING AND SPREADING OF THE FILL SHALL BE DETERMINED BY THE CONTRACTOR TO ENSURE THE FILL IS PLACED IN A UNIFORM MIXTURE.
- ALL SERVICE TRENCHES & SITE EXCAVATIONS TO BE BACKFILLED & TESTED.
- BACKFILL SHALL NOT BE PLACED AGAINST ABUTMENTS, PIERS OR RETAINING WALLS UNTIL ALL CAST IN PLACE CONCRETE HAS REACHED THE 28 DAY CHARACTERISTIC COMPRESSIVE STRENGTH AND IS AT LEAST 14 DAYS OLD. VIBRATING MACHINERY SHALL NOT BE USED WITHIN 6m OF RETAINING WALLS.
- ALL EARTHWORKS ARE TO BE UNDERTAKEN IN ACCORDANCE WITH THE TECHNICAL AND CONTROL REQUIREMENTS OUTLINED IN AS 3798 – 'GUIDELINES ON EARTHWORKS FOR COMMERCIAL AND RESIDENTIAL DEVELOPMENT. ALL WORKMANSHIP AND MATERIAL SHALL BE IN ACCORDANCE WITH AS3600 CONCRETE STRUCTURES.

CONCRETE

- ALL WORKMANSHIP AND MATERIAL SHALL BE IN ACCORDANCE WITH AS3600.
- ALL CONCRETE GRADE UNO 32MPA.
- ALL CONCRETE TO BE READY MIXED SUPPLIED IN ACCORDANCE WITH AS1379 BY THE BATCH PRODUCTION PROCESS. READY MIXED CONCRETE SHALL BE DELIVERED IN AGITATING TRUCKS.
- ALL FOOTINGS ON GROUND SHALL HAVE A DAMP PROOF MEMBRANE TO AS2870 UNLESS NOTED OTHERWISE.
- ALL REINFORCEMENT FOR ONE POUR SHALL BE ENTIRELY TIED AND PLACED TO COMPLETION BEFORE AN INSPECTION BY THE ENGINEER, BUILDING SURVEYOR OR ARCHITECT.
- ALL CONCRETE STEEL REINFORCEMENT GARDE IS 500MPa UNO.

BEACHING

- ALL WORKMANSHIP AND MATERIAL SHALL BE IN ACCORDANCE WITH VICROADS STANDARD SPECIFICATION 713 – BEACHING.
- SUPPLY AND INSTALL THE GEOFABRIC AS SPECIFIED OF AT LEAST 250g/m2 AND STRENGTH RATING G OF AT LEAST 2500 (BIDIM A34 OR EQUIVALENT) OVER THE PREPARED SURFACE AND UNDERNEATH THE ROCK BEACHING ENSURING:
 - OVERLAPPING OF ANY JOINS BY AT LEAST 300mm.
 - EXTENDING THE GEOFABRIC AROUND ALL FACES OF THE TOE TRENCH INCLUDING THE TOE TRENCH RUNNING UP THE BANK AT EACH END OF THE RETAINING WALL STRUCTURE.
 - EXTENDING THE GEOFABRIC AROUND THE UPSTREAM AND DOWNSTREAM ENDS OF THE RETAINING WALL STRUCTURE BETWEEN THE ENDS OF THE RETAINING WALL AND THE TOE TRENCH.
 - LEAVING SUFFICIENT GEOFABRIC EXPOSED AT THE UPPER EDGE ALONG THE LINE OF THE LOWER RETAINING WALL AND AT THE ENDS OF THE RETAINING WALLS TO EXTEND AT LEAST 500mm UP ITS INSIDE FACE OF THOSE WALLS.
 - LAPPING THE GEOFABRIC OVER OR UNDER THE GEOFABRIC PLACED AROUND THE BOAT RAMP BY AT LEAST 300mm.
- BEACHING TO BE MINIMUM 300mm THICK IN ACCORDANCE WITH THE VICROADS STANDARD SPECIFICATIONS SECTION 713 WITH TYPE 1 BEACHING. MINIMUM DEPTH 300mm AND EXTEND MINIMUM 1m. INDIVIDUAL ROCKS TO HAVE A MASS OF BETWEEN 20kg AND 70kg.

TIMBER WORKS

- RED GUM PLANS TO BE F7 GRADE 200mm x 100mm SIZE THAT ARE STRAIGHT GRAINED AND FREE OF HEART ROT, EXCESSIVE GUM VEINS AND HOLES.
- 200mm x 100mm RED GUM PLANK IS TO EXTEND THE FULL DISTANCE BETWEEN COLUMNS AND BE FASTENED TO TEH TOP WALLING PLANK BY FIVE EVENLY SPACED 200mm LONG x 10mm DIAMETER GALVANISED COACH SCREWS COUNTERSUNK TO BELOW FACE LEVEL WITH RECESS FILLED FLUSH WITH SILICONE SEALANT.
- SUBSOIL DRAIN AND GRANULAR BACKFILL WRAPPED IN GEOFABRIC TO THE REAR OF THE RETAINING WALLS. THE GRANULAR BACKFILL TO BE AT LEAST 200mm THICK FROM THE REAR OF THE WALL AND THE SUBSOIL DRAIN TO BE RELIEVED TO THE OUTSIDE FACE OF THE WALL AT 50 METRE CENTRES.
- INSTALL THE GEOFABRIC AT LEAST 500mm UP THE REAR FACE OF THE RETAINING WALLS ADJACENT THE BEACHING INCLUDING THE END RETURNS AND TACKING IT IN PLACE TO ENSURE IT REMAINS THERE DURING BACKFILLING OF THE WALL.
- R10 DOWELS MID SPAN OF EACH RED GUM PANEL TO PREVENT DIFFERENTIAL BOWING OF THE TIMBERS.

DISCLAIMER

Notwithstanding any description contained in the Plans or Specification the Contractor shall be responsible for satisfying himself as to the nature and extent of the specified works and the physical and legal conditions under which the works will be carried out, including means of access, extent of clearing, nature of material to be excavated, type and size of mechanical plant required and any like matters affecting the construction of the works.

©INFORMATION CONTAINED ON THIS DRAWING IS THE COPYRIGHT OF PLANRIGHT AUSTRALASIA Pty. Ltd. COPYING OR USING THIS DRAWING IN WHOLE OR PART WITHOUT PERMISSION INFRINGES COPYRIGHT.

WARNING

BWARE OF ALL SERVICES

The location of all services, where shown, are approximate only. All authorities must be contacted prior to construction to determine the exact location and clearance requirements of all services.



RELEASE	H		
	G		
	F		
	E		
	D		
	C		
	B		
No.	DATE	DESCRIPTION	

SCALE:

DOCUMENT PURPOSE:
☐ PRELIMINARY ONLY ☐ CONSTRUCTION
☒ APPROVAL ☐ AS CONSTRUCTED
☐ FOR TENDER ONLY ☐ OTHER

B.M. No.:

B.M.El.:

DATUM: MGA 54

GDA 2020

SURVEYED: PA JS

FEB '24

DESIGNED: JJ

APR '24

DRAWN: JJ

APR '24

CHECKED: YH

MAY '24

ORIGINAL SHEET SIZE : A1

IDEAS INTO ACTION
PLANRIGHT
Civil Engineers, Irrigation Designers, Licensed Surveyors.
139 Hogan Street, TATURA Ph. 03 58241322
24B Sydney Street, KILMORE Ph. 03 57822238
21 Nish Street, ECHUCA Ph. 03 54821699
Email:results@planright.com.au

RETAINING WALL WORKS MURRAY RIVER SWAN HILL

Locality & Notes

CAD: 24010 Murray River Retaining Walls

PLOTTED:

DRAWING No.
24010
RELEASE 07
/1

SHEET 1 OF 10



LEGEND

- EXISTING SURFACE LEVEL
- EXISTING STOP VALVE
- EXISTING FIRE PLUG
- EXISTING DRAINAGE PIPE
- EXISTING DRAINAGE PIT
- EXISTING TOP OF BANK
- EXISTING TOE OF BANK
- EXISTING FEATURE
- EXISTING SURFACE LEVEL CONTOUR
- EXISTING TREE
- VEGETATION AREA
- TBM
- EXISTING LIGHT
- EXISTING ELEC PIT
- EXISTING FENCE
- PROPOSED RETAINING WALL BEAM AND FOOTING
- PROPOSED RETAINING WALL
- PROPOSED BEACHING
- PROPOSED '10 STEPS' UPGRADE

EXISTING CONDITIONS - 10 STEPS

DISCLAIMER
Notwithstanding any description contained in the Plans or Specification the Contractor shall be responsible for satisfying himself as to the nature and extent of the specified works and the physical and legal conditions under which the works will be carried out, including means of access, extent of clearing, nature of material to be excavated, type and size of mechanical plant required and any like matters effecting the construction of the works.

WARNING
BEWARE OF ALL SERVICES
The location of all services, where shown, are approximate only. All authorities must be contacted prior to construction to determine the exact location and clearance requirements of all services.

RELEASE	H		
	G		
	F		
	E		
	D		
	C		
	B		
No.	DATE	DESCRIPTION	

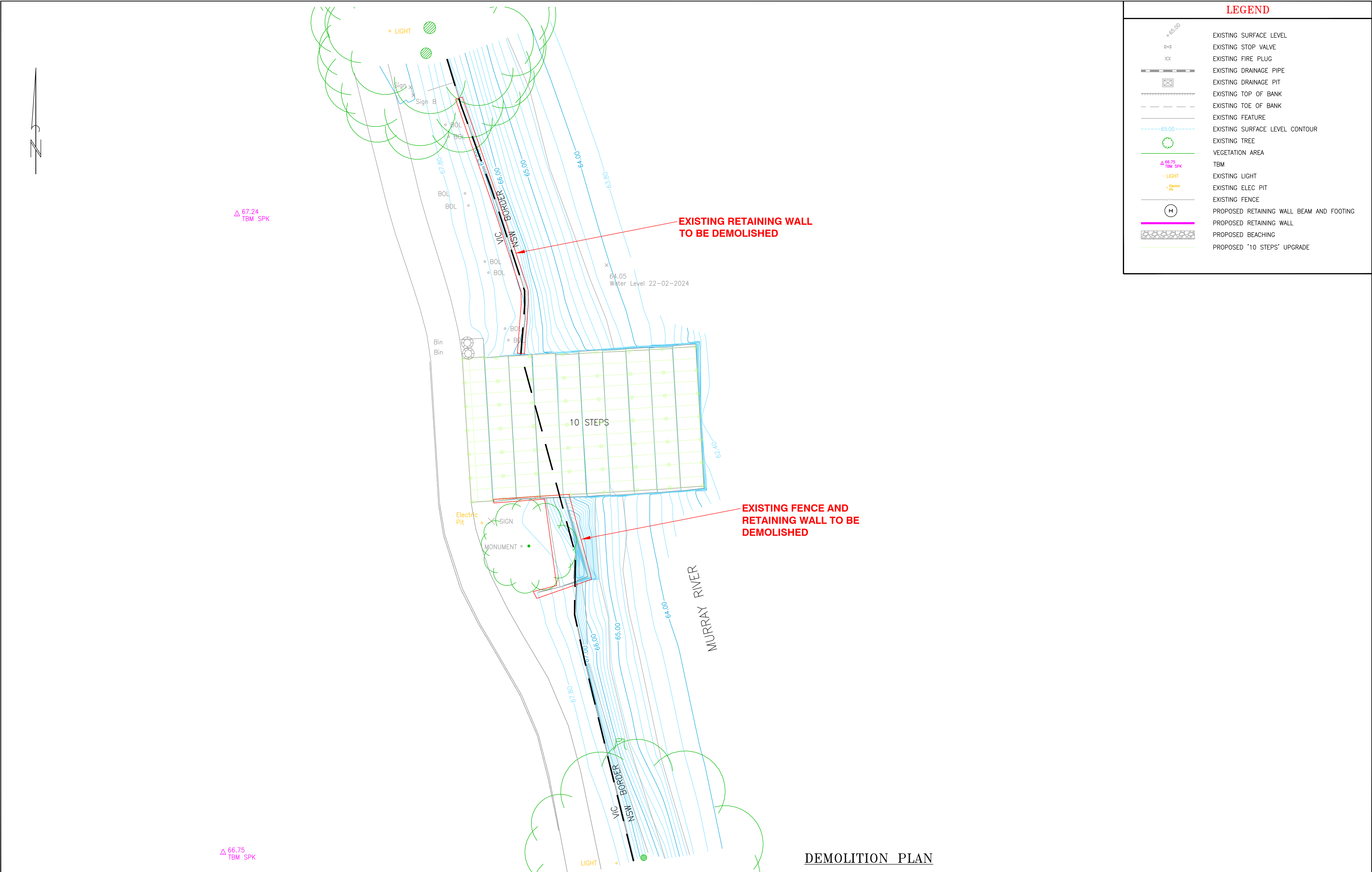
SCALE:	
HOR: 1:150 (A1) 1:300 (A3)	9 12
0m 1.5 3 6	
VER: N/A	
DOCUMENT PURPOSE:	
<input type="checkbox"/> PRELIMINARY ONLY	<input type="checkbox"/> CONSTRUCTION
<input checked="" type="checkbox"/> APPROVAL	<input type="checkbox"/> AS CONSTRUCTED
<input type="checkbox"/> FOR TENDER ONLY	<input type="checkbox"/> OTHER

B.M. No.:		B.M.EL.:	
DATUM: MGA 54		GDA 2020	
SURVEYED: PA JS		FEB '24	
DESIGNED: JJ		APR '24	
DRAWN: JJ		APR '24	
CHECKED: YH		MAY '24	
ORIGINAL SHEET SIZE : A1			

PLANRIGHT
IDEAS INTO ACTION
Civil Engineers, Irrigation Designers, Licensed Surveyors.
139 Hogan Street, TATURA Ph. 03 58241322
24B Sydney Street, KILMORE Ph. 03 57822238
21 Nish Street, ECHUCA Ph. 03 54821699
Email: results@planright.com.au

RETAINING WALL WORKS	
MURRAY RIVER	
SWAN HILL	
Existing Conditions - 10 Steps	
CAD: 24010 Murray River Retaining Walls	PLOTTED:

DRAWING No.
24010/2
RELEASE 07
SHEET 2 OF 10

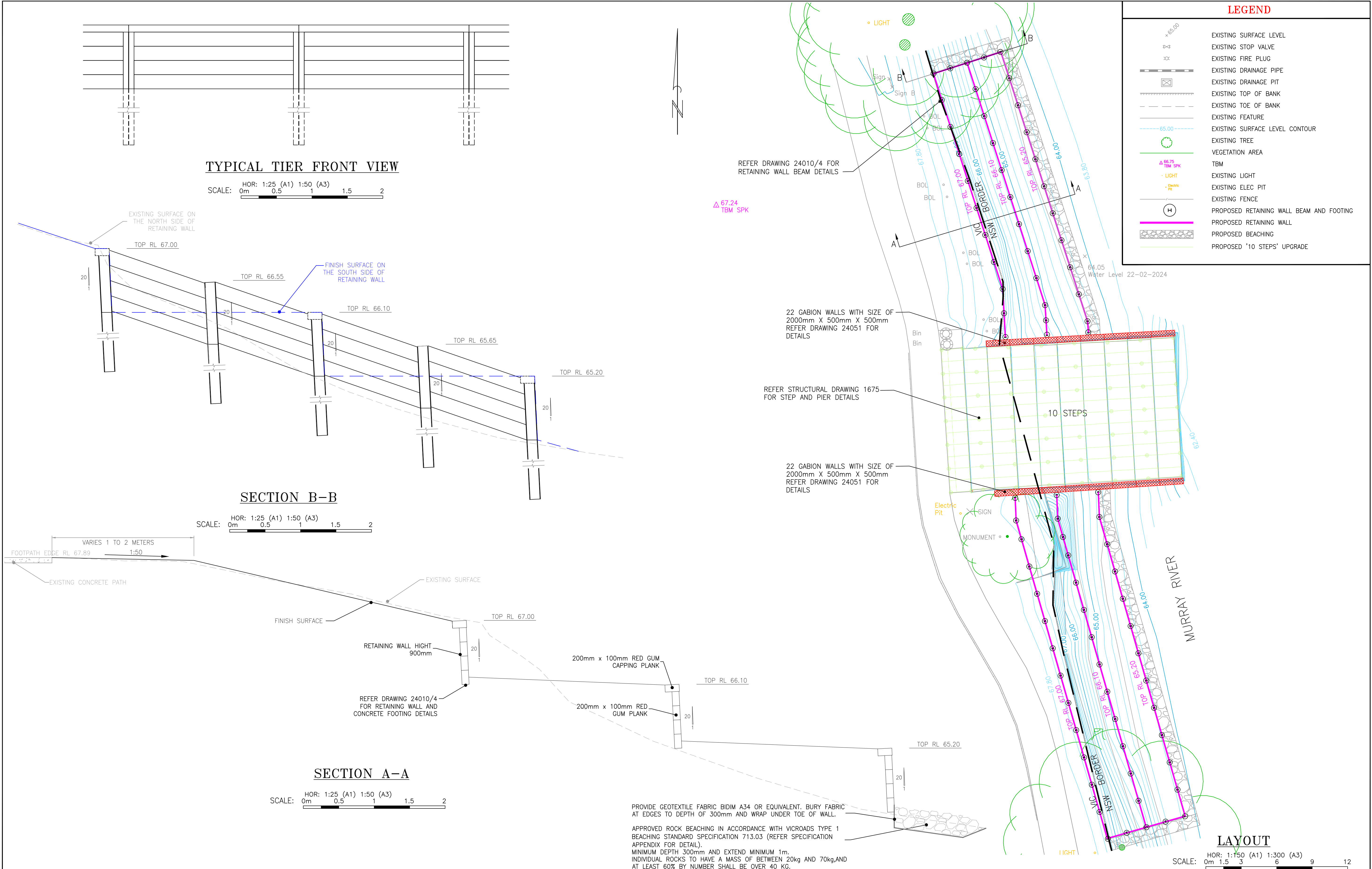


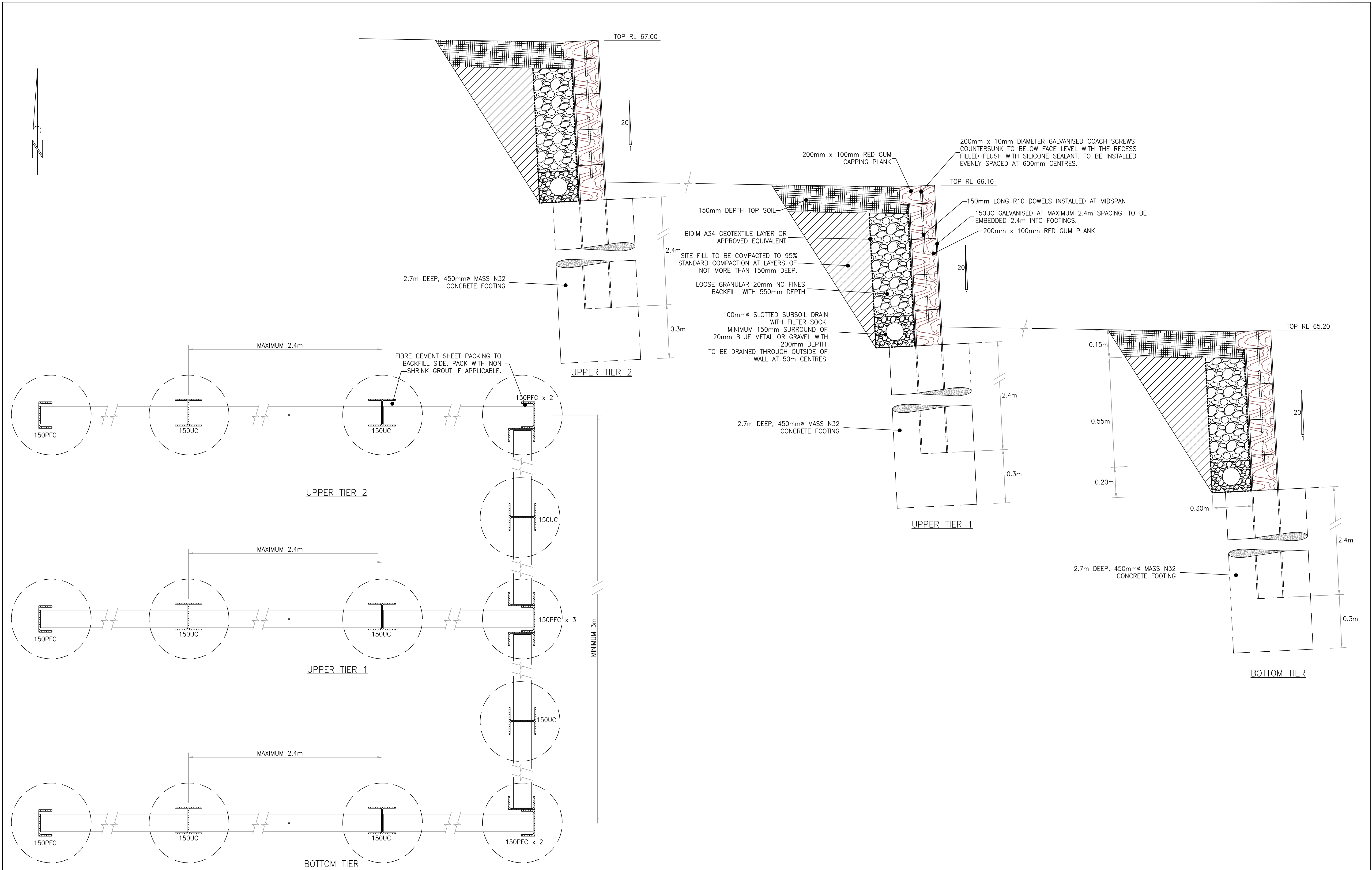
LEGEND

- EXISTING SURFACE LEVEL
- EXISTING STOP VALVE
- EXISTING FIRE PLUG
- EXISTING DRAINAGE PIPE
- EXISTING DRAINAGE PIT
- EXISTING TOP OF BANK
- EXISTING TOE OF BANK
- EXISTING FEATURE
- EXISTING SURFACE LEVEL CONTOUR
- EXISTING TREE
- VEGETATION AREA
- TBM
- EXISTING LIGHT
- EXISTING ELEC PIT
- EXISTING FENCE
- PROPOSED RETAINING WALL BEAM AND FOOTING
- PROPOSED RETAINING WALL
- PROPOSED BEACHING
- PROPOSED '10 STEPS' UPGRADE

DEMOLITION PLAN

<div>DISCLAIMER</div> <div>Notwithstanding any description contained in the Plans or Specification the Contractor shall be responsible for satisfying himself as to the nature and extent of the specified works and the physical and legal conditions under which the works will be carried out, including means of access, extent of clearing, nature of material to be excavated, type and size of mechanical plant required and any like matters effecting the construction of the works.</div> <div>INFORMATION CONTAINED ON THIS DRAWING IS THE COPYRIGHT OF PLANRIGHT AUSTRALASIA Pty. Ltd. COPYING OR USING THIS DRAWING IN WHOLE OR PART WITHOUT PERMISSION INFRINGES COPYRIGHT.</div>		<div>WARNING</div> <div>BEWARE OF ALL SERVICES</div> <div>The location of all services, where shown, are approximate only. All authorities must be contacted prior to construction to determine the exact location and clearance requirements of all services.</div> <div><div>DO NOT SCALE</div><div>DO NOT SCALE</div><div>DO NOT SCALE</div><div>DO NOT SCALE</div><div>DO NOT SCALE</div><div>DO NOT SCALE</div><div>DO NOT SCALE</div><div>DO NOT SCALE</div><div>DO NOT SCALE</div><div>DO NOT SCALE</div><div>DO NOT SCALE</div><div>DO NOT SCALE</div><div>DO NOT SCALE</div><div>DO NOT SCALE</div><div>DO NOT SCALE</div><div>DO NOT SCALE</div><div>DO NOT SCALE</div><div>DO NOT SCALE</div><div>DO NOT SCALE</div><div>DO NOT SCALE</div><div>DO NOT SCALE</div><div>DO NOT SCALE</div><div>DO NOT SCALE</div><div>DO NOT SCALE</div><div>DO NOT SCALE</div><div>DO NOT SCALE</div><div>DO NOT SCALE</div><div>DO NOT SCALE</div><div>DO NOT SCALE</div><div>DO NOT SCALE</div><div>DO NOT SCALE</div><div>DO NOT SCALE</div><div>DO NOT SCALE</div><div>DO NOT SCALE</div><div>DO NOT SCALE</div><div>DO NOT SCALE</div><div>DO NOT SCALE</div><div>DO NOT SCALE</div><div>DO NOT SCALE</div><div>DO NOT SCALE</div><div>DO NOT SCALE</div><div>DO NOT SCALE</div><div>DO NOT SCALE</div><div>DO NOT SCALE</div><div>DO NOT SCALE</div><div>DO NOT SCALE</div><div>DO NOT SCALE</div><div>DO NOT SCALE</div><div>DO NOT SCALE</div><div>DO NOT SCALE</div><div>DO NOT SCALE</div><div>DO NOT SCALE</div><div>DO NOT SCALE</div><div>DO NOT SCALE</div><div>DO NOT SCALE</div><div>DO NOT SCALE</div><div>DO NOT SCALE</div><div>DO NOT SCALE</div><div>DO NOT SCALE</div><div>DO NOT SCALE</div><div>DO NOT SCALE</div><div>DO NOT SCALE</div><div>DO NOT SCALE</div><div>DO NOT SCALE</div><div>DO NOT SCALE</div><div>DO NOT SCALE</div><div>DO NOT SCALE</div><div>DO NOT SCALE</div><div>DO NOT SCALE</div><div>DO NOT SCALE</div><div>DO NOT SCALE</div><div>DO NOT SCALE</div><div>DO NOT SCALE</div><div>DO NOT SCALE</div><div>DO NOT SCALE</div><div>DO NOT SCALE</div><div>DO NOT SCALE</div><div>DO NOT SCALE</div><div>DO NOT SCALE</div><div>DO NOT SCALE</div><div>DO NOT SCALE</div><div>DO NOT SCALE</div><div>DO NOT SCALE</div><div>DO NOT SCALE</div><div>DO NOT SCALE</div><div>DO NOT SCALE</div><div>DO NOT SCALE</div><div>DO NOT SCALE</div><div>DO NOT SCALE</div><div>DO NOT SCALE</div><div>DO NOT SCALE</div><div>DO NOT SCALE</div><div>DO NOT SCALE</div><div>DO NOT SCALE</div><div>DO NOT SCALE</div><div>DO NOT SCALE</div><div>DO NOT SCALE</div><div>DO NOT SCALE</div><div>DO NOT SCALE</div><div>DO NOT SCALE</div><div>DO NOT SCALE</div><div>DO NOT SCALE</div><div>DO NOT SCALE</div><div>DO NOT SCALE</div><div>DO NOT SCALE</div><div>DO NOT SCALE</div><div>DO NOT SCALE</div><div>DO NOT SCALE</div><div>DO NOT SCALE</div><div>DO NOT SCALE</div><div>DO NOT SCALE</div><div>DO NOT SCALE</div><div>DO NOT SCALE</div><div>DO NOT SCALE</div><div>DO NOT SCALE</div><div>DO NOT SCALE</div><div>DO NOT SCALE</div><div>DO NOT SCALE</div><div>DO NOT SCALE</div><div>DO NOT SCALE</div><div>DO NOT SCALE</div><div>DO NOT SCALE</div><div>DO NOT SCALE</div><div>DO NOT SCALE</div><div>DO NOT SCALE</div><div>DO NOT SCALE</div><div>DO NOT SCALE</div><div>DO NOT SCALE</div><div>DO NOT SCALE</div><div>DO NOT SCALE</div><div>DO NOT SCALE</div><div>DO NOT SCALE</div><div>DO NOT SCALE</div><div>DO NOT SCALE</div><div>DO NOT SCALE</div><div>DO NOT SCALE</div><div>DO NOT SCALE</div><div>DO NOT SCALE</div><div>DO NOT SCALE</div><div>DO NOT SCALE</div><div>DO NOT SCALE</div><div>DO NOT SCALE</div><div>DO NOT SCALE</div><div>DO NOT SCALE</div><div>DO NOT SCALE</div><div>DO NOT SCALE</div><div>DO NOT SCALE</div><div>DO NOT SCALE</div><div>DO NOT SCALE</div><div>DO NOT SCALE</div><div>DO NOT SCALE</div><div>DO NOT SCALE</div><div>DO NOT SCALE</div><div>DO NOT SCALE</div><div>DO NOT SCALE</div><div>DO NOT SCALE</div><div>DO NOT SCALE</div><div>DO NOT SCALE</div><div>DO NOT SCALE</div><div>DO NOT SCALE</div><div>DO NOT SCALE</div><div>DO NOT SCALE</div><div>DO NOT SCALE</div><div>DO NOT SCALE</div><div>DO NOT SCALE</div><div>DO NOT SCALE</div><div>DO NOT SCALE</div><div>DO NOT SCALE</div><div>DO NOT SCALE</div><div>DO NOT SCALE</div><div>DO NOT SCALE</div><div>DO NOT SCALE</div><div>DO NOT SCALE</div><div>DO NOT SCALE</div><div>DO NOT SCALE</div><div>DO NOT SCALE</div><div>DO NOT SCALE</div><div>DO NOT SCALE</div><div>DO NOT SCALE</div><div>DO NOT SCALE</div><div>DO NOT SCALE</div><div>DO NOT SCALE</div><div>DO NOT SCALE</div><div>DO NOT SCALE</div><div>DO NOT SCALE</div><div>DO NOT SCALE</div><div>DO NOT SCALE</div><div>DO NOT SCALE</div><div>DO NOT SCALE</div><div>DO NOT SCALE</div><div>DO NOT SCALE</div><div>DO NOT SCALE</div><div>DO NOT SCALE</div><div>DO NOT SCALE</div><div>DO NOT SCALE</div><div>DO NOT SCALE</div><div>DO NOT SCALE</div><div>DO NOT SCALE</div><div>DO NOT SCALE</div><div>DO NOT SCALE</div><div>DO NOT SCALE</div><div>DO NOT SCALE</div><div>DO NOT SCALE</div><div>DO NOT SCALE</div><div>DO NOT SCALE</div><div>DO NOT SCALE</div><div>DO NOT SCALE</div><div>DO NOT SCALE</div><div>DO NOT SCALE</div><div>DO NOT SCALE</div><div>DO NOT SCALE</div><div>DO NOT SCALE</div><div>DO NOT SCALE</div><div>DO NOT SCALE</div><div>DO NOT SCALE</div><div>DO NOT SCALE</div><div>DO NOT SCALE</div><div>DO NOT SCALE</div><div>DO NOT SCALE</div><div>DO NOT SCALE</div><div>DO NOT SCALE</div><div>DO NOT SCALE</div><div>DO NOT SCALE</div><div>DO NOT SCALE</div><div>DO NOT SCALE</div><div>DO NOT SCALE</div><div>DO NOT SCALE</div><div>DO NOT SCALE</div><div>DO NOT SCALE</div><div>DO NOT SCALE</div><div>DO NOT SCALE</div><div>DO NOT SCALE</div><div>DO NOT SCALE</div><div>DO NOT SCALE</div><div>DO NOT SCALE</div><div>DO NOT SCALE</div><div>DO NOT SCALE</div><div>DO NOT SCALE</div><div>DO NOT SCALE</div><div>DO NOT SCALE</div><div>DO NOT SCALE</div><div>DO NOT SCALE</div><div>DO NOT SCALE</div><div>DO NOT SCALE</div><div>DO NOT SCALE</div><div>DO NOT SCALE</div><div>DO NOT SCALE</div><div>DO NOT SCALE</div><div>DO NOT SCALE</div><div>DO NOT SCALE</div><div>DO NOT SCALE</div><div>DO NOT SCALE</div><div>DO NOT SCALE</div><div>DO NOT SCALE</div><div>DO NOT SCALE</div><div>DO NOT SCALE</div><div>DO NOT SCALE</div><div>DO NOT SCALE</div><div>DO NOT SCALE</div><div>DO NOT SCALE</div><div>DO NOT SCALE</div><div>DO NOT SCALE</div><div>DO NOT SCALE</div><div>DO NOT SCALE</div><div>DO NOT SCALE</div><div>DO NOT SCALE</div><div>DO NOT SCALE</div><div>DO NOT SCALE</div><div>DO NOT SCALE</div><div>DO NOT SCALE</div><div>DO NOT SCALE</div><div>DO NOT SCALE</div><div>DO NOT SCALE</div><div>DO NOT SCALE</div><div>DO NOT SCALE</div><div>DO NOT SCALE</div><div>DO NOT SCALE</div><div>DO NOT SCALE</div><div>DO NOT SCALE</div><div>DO NOT SCALE</div><div>DO NOT SCALE</div><div>DO NOT SCALE</div><div>DO NOT SCALE</div><div>DO NOT SCALE</div><div>DO NOT SCALE</div><div>DO NOT SCALE</div><div>DO NOT SCALE</div><div>DO NOT SCALE</div><div>DO NOT SCALE</div><div>DO NOT SCALE</div><div>DO NOT SCALE</div><div>DO NOT SCALE</div><div>DO NOT SCALE</div><div>DO NOT SCALE</div><div>DO NOT SCALE</div><div>DO NOT SCALE</div><div>DO NOT SCALE</div><div>DO NOT SCALE</div><div>DO NOT SCALE</div><div>DO NOT SCALE</div><div>DO NOT SCALE</div><div>DO NOT SCALE</div><div>DO NOT SCALE</div><div>DO NOT SCALE</div><div>DO NOT SCALE</div><div>DO NOT SCALE</div><div>DO NOT SCALE</div><div>DO NOT SCALE</div><div>DO NOT SCALE</div><div>DO NOT SCALE</div><div>DO NOT SCALE</div><div>DO NOT SCALE</div><div>DO NOT SCALE</div><div>DO NOT SCALE</div><div>DO NOT SCALE</div><div>DO NOT SCALE</div><div>DO NOT SCALE</div><div>DO NOT SCALE</div><div>DO NOT SCALE</div><div>DO NOT SCALE</div><div>DO NOT SCALE</div><div>DO NOT SCALE</div><div>DO NOT SCALE</div><div>DO NOT SCALE</div><div>DO NOT SCALE</div><div>DO NOT SCALE</div><div>DO NOT SCALE</div><div>DO NOT SCALE</div><div>DO NOT SCALE</div><div>DO NOT SCALE</div><div>DO NOT SCALE</div><div>DO NOT SCALE</div><div>DO NOT SCALE</div><div>DO NOT SCALE</div><div>DO NOT SCALE</div><div>DO NOT SCALE</div><div>DO NOT SCALE</div><div>DO NOT SCALE</div><div>DO NOT SCALE</div><div>DO NOT SCALE</div><div>DO NOT SCALE</div><div>DO NOT SCALE</div><div>DO NOT SCALE</div><div>DO NOT SCALE</div><div>DO NOT SCALE</div><div>DO NOT SCALE</div><div>DO NOT SCALE</div><div>DO NOT SCALE</div><div>DO NOT SCALE</div><div>DO NOT SCALE</div><div>DO NOT SCALE</div><div>DO NOT SCALE</div><div>DO NOT SCALE</div><div>DO NOT SCALE</div><div>DO NOT SCALE</div><div>DO NOT SCALE</div><div>DO NOT SCALE</div><div>DO NOT SCALE</div><div>DO NOT SCALE</div><div>DO NOT SCALE</div><div>DO NOT SCALE</div><div>DO NOT SCALE</div><div>DO NOT SCALE</div><div>DO NOT SCALE</div><div>DO NOT SCALE</div><div>DO NOT SCALE</div><div>DO NOT SCALE</div><div>DO NOT SCALE</div><div>DO NOT SCALE</div><div>DO NOT SCALE</div><div>DO NOT SCALE</div><div>DO NOT SCALE</div><div>DO NOT SCALE</div><div>DO NOT SCALE</div><div>DO NOT SCALE</div><div>DO NOT SCALE</div><div>DO NOT SCALE</div><div>DO NOT SCALE</div><div>DO NOT SCALE</div><div>DO NOT SCALE</div><div>DO NOT SCALE</div><div>DO NOT SCALE</div><div>DO NOT SCALE</div><div>DO NOT SCALE</div><div>DO NOT SCALE</div><div>DO NOT SCALE</div><div>DO NOT SCALE</div><div>DO NOT SCALE</div><div>DO NOT SCALE</div><div>DO NOT SCALE</div><div>DO NOT SCALE</div><div>DO NOT SCALE</div><div>DO NOT SCALE</div><div>DO NOT SCALE</div><div>DO NOT SCALE</div><div>DO NOT SCALE</div><div>DO NOT SCALE</div><div>DO NOT SCALE</div><div>DO NOT SCALE</div><div>DO NOT SCALE</div><div>DO NOT SCALE</div><div>DO NOT SCALE</div><div>DO NOT SCALE</div><div>DO NOT SCALE</div><div>DO NOT SCALE</div><div>DO NOT SCALE</div><div>DO NOT SCALE</div><div>DO NOT SCALE</div><div>DO NOT SCALE</div><div>DO NOT SCALE</div><div>DO NOT SCALE</div><div>DO NOT SCALE</div><div>DO NOT SCALE</div><div>DO NOT SCALE</div><div>DO NOT SCALE</div><div>DO NOT SCALE</div><div>DO NOT SCALE</div><div>DO NOT SCALE</div><div>DO NOT SCALE</div><div>DO NOT SCALE</div><div>DO NOT SCALE</div><div>DO NOT SCALE</div><div>DO NOT SCALE</div><div>DO NOT SCALE</div><div>DO NOT SCALE</div><div>DO NOT SCALE</div><div>DO NOT SCALE</div><div>DO NOT SCALE</div><div>DO NOT SCALE</div><div>DO NOT SCALE</div><div>DO NOT SCALE</div><div>DO NOT SCALE</div><div>DO NOT SCALE</div><div>DO NOT SCALE</div><div>DO NOT SCALE</div><div>DO NOT SCALE</div><div>DO NOT SCALE</div><div>DO NOT SCALE</div><div>DO NOT SCALE</div><div>DO NOT SCALE</div><div>DO NOT SCALE</div><div>DO NOT SCALE</div><div>DO NOT SCALE</div><div>DO NOT SCALE</div><div>DO NOT SCALE</div><div>DO NOT SCALE</div><div>DO NOT SCALE</div><div>DO NOT SCALE</div><div>DO NOT SCALE</div><div>DO NOT SCALE</div><div>DO NOT SCALE</div><div>DO NOT SCALE</div><div>DO NOT SCALE</div><div>DO NOT SCALE</div><div>DO NOT SCALE</div><div>DO NOT SCALE</div><div>DO NOT SCALE</div><div>DO NOT SCALE</div><div>DO NOT SCALE</div><div>DO NOT SCALE</div><div>DO NOT SCALE</div><div>DO NOT SCALE</div><div>DO NOT SCALE</div><div>DO NOT SCALE</div><div>DO NOT SCALE</div><div>DO NOT SCALE</div><div>DO NOT SCALE</div><div>DO NOT SCALE</div><div>DO NOT SCALE</div><div>DO NOT SCALE</div><div>DO NOT SCALE</div><div>DO NOT SCALE</div><div>DO NOT SCALE</div><div>DO NOT SCALE</div><div>DO NOT SCALE</div><div>DO NOT SCALE</div><div>DO NOT SCALE</div><div>DO NOT SCALE</div><div>DO NOT SCALE</div><div>DO NOT SCALE</div><div>DO NOT SCALE</div><div>DO NOT SCALE</div><div>DO NOT SCALE</div><div>DO NOT SCALE</div><div>DO NOT SCALE</div><div>DO NOT SCALE</div><div>DO NOT SCALE</div><div>DO NOT SCALE</div><div>DO NOT SCALE</div><div>DO NOT SCALE</div><div>DO NOT SCALE</div><div>DO NOT SCALE</div><div>DO NOT SCALE</div><div>DO NOT SCALE</div><div>DO NOT SCALE</div><div>DO NOT SCALE</div><div>DO NOT SCALE</div><div>DO NOT SCALE</div><div>DO NOT SCALE</div><div>DO NOT SCALE</div><div>DO NOT SCALE</div><div>DO NOT SCALE</div><div>DO NOT SCALE</div><div>DO NOT SCALE</div><div>DO NOT SCALE</div><div>DO NOT SCALE</div><div>DO NOT SCALE</div><div>DO NOT SCALE</div><div>DO NOT SCALE</div><div>DO NOT SCALE</div><div>DO NOT SCALE</div><div>DO NOT SCALE</div><div>DO NOT SCALE</div><div>DO NOT SCALE</div><div>DO NOT SCALE</div><div>DO NOT SCALE</div><div>DO NOT SCALE</div><div>DO NOT SCALE</div><div>DO NOT SCALE</div><div>DO NOT SCALE</div><div>DO NOT SCALE</div><div>DO NOT SCALE</div><div>DO NOT SCALE</div><div>DO NOT SCALE</div><div>DO NOT SCALE</div><div>DO NOT SCALE</div><div>DO NOT SCALE</div><div>DO NOT SCALE</div><div>DO NOT SCALE</div><div>DO NOT SCALE</div><div>DO NOT SCALE</div><div>DO NOT SCALE</div><div>DO NOT SCALE</div><div>DO NOT SCALE</div><div>DO NOT SCALE</div><div>DO NOT SCALE</div><div>DO NOT SCALE</div><div>DO NOT SCALE</div><div>DO NOT SCALE</div><div>DO NOT SCALE</div><div>DO NOT SCALE</div></div>	
---	--	---	--

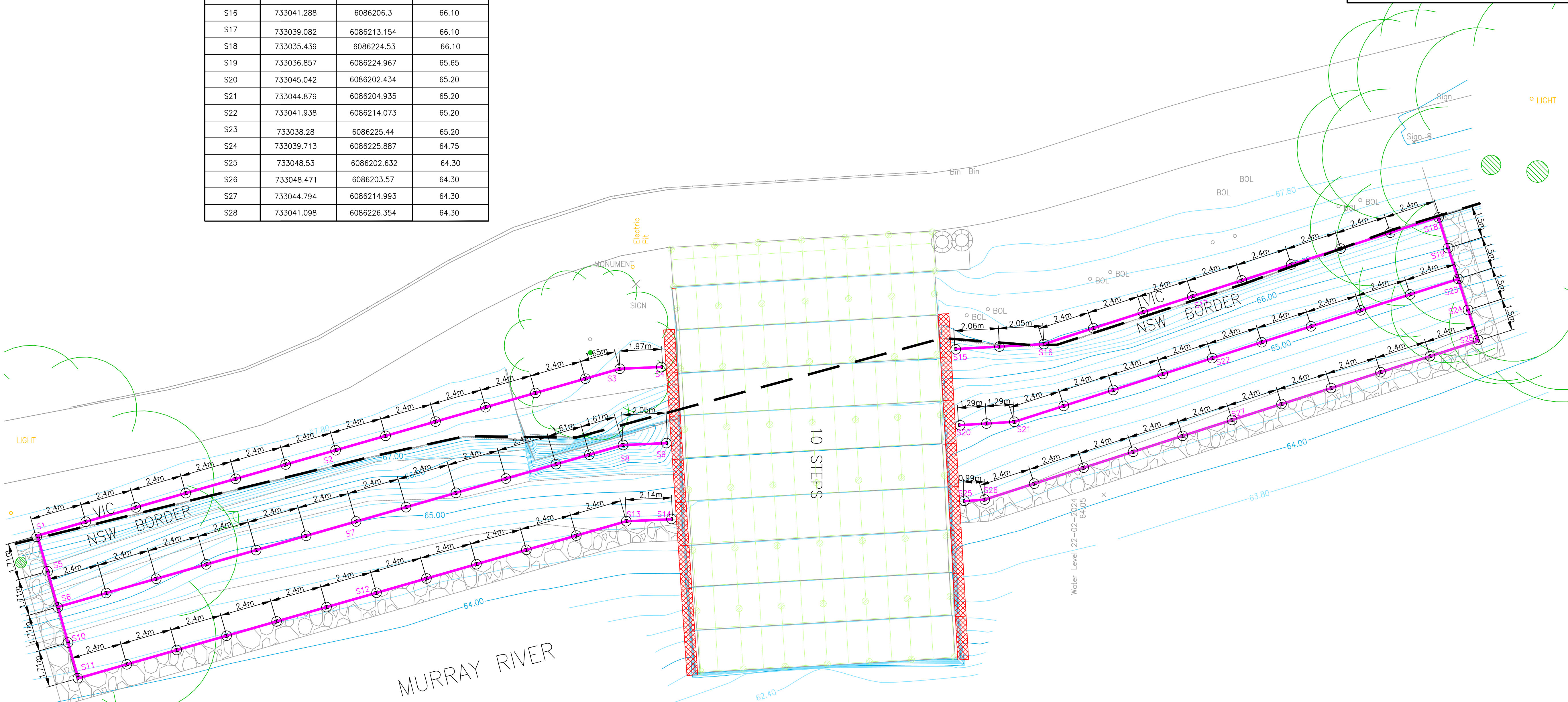




CONCRETE FOOTINGS SETOUT TABLE			
SETOUT POINT	EASTING	NORTHING	TOP OF CONCRETE FOOTING LEVEL
S1	733050.196	6086159.787	66.10
S2	733046.19	6086173.594	66.10
S3	733042.428	6086186.717	66.10
S4	733042.351	6086188.631	66.10
S5	733051.785	6086160.292	65.65
S6	733053.457	6086160.768	65.20
S7	733049.485	6086174.538	65.20
S8	733045.95	6086186.868	65.20
S9	733045.863	6086188.868	65.20
S10	733055.079	6086161.237	64.75
S11	733056.726	6086161.691	64.30
S12	733052.78	6086175.483	64.30
S13	733049.472	6086187.018	64.30
S14	733049.368	6086189.103	64.30
S15	733041.528	6086202.234	66.10
S16	733041.288	6086206.3	66.10
S17	733039.082	6086213.154	66.10
S18	733035.439	6086224.53	66.10
S19	733036.857	6086224.967	65.65
S20	733045.042	6086202.434	65.20
S21	733044.879	6086204.935	65.20
S22	733041.938	6086214.073	65.20
S23	733038.28	6086225.44	65.20
S24	733039.713	6086225.887	64.75
S25	733048.53	6086202.632	64.30
S26	733048.471	6086203.57	64.30
S27	733044.794	6086214.993	64.30
S28	733041.098	6086226.354	64.30

LEGEND

	EXISTING SURFACE LEVEL
	EXISTING STOP VALVE
	EXISTING FIRE PLUG
	EXISTING DRAINAGE PIPE
	EXISTING TOP OF BANK
	EXISTING TOE OF BANK
	EXISTING FEATURE
	EXISTING SURFACE LEVEL CONTOUR
	EXISTING TREE
	VEGETATION AREA
	TBM
	EXISTING LIGHT
	EXISTING ELEC PIT
	EXISTING FENCE
	PROPOSED RETAINING WALL BEAM AND FOOTING
	PROPOSED RETAINING WALL
	PROPOSED BEACHING
	PROPOSED '10 STEPS' UPGRADE



DISCLAIMER

Notwithstanding any description contained in the Plans or Specification the Contractor shall be responsible for satisfying himself as to the nature and extent of the specified works and the physical and legal conditions under which the works will be carried out, including means of access, extent of clearing, nature of material to be excavated, type and size of mechanical plant required and any like matters effecting the construction of the works.

INFORMATION CONTAINED ON THIS DRAWING IS THE COPYRIGHT OF PLANRIGHT AUSTRALASIA Pty. Ltd. COPYING OR USING THIS DRAWING IN WHOLE OR PART WITHOUT PERMISSION INFRINGES COPYRIGHT.

WARNING

BEWARE OF ALL SERVICES

The location of all services, where shown, are approximate only. All authorities must be contacted prior to construction to determine the exact location and clearance requirements of all services.



RELEASE	H		
	G		
	F		
	E		
	D		
	C		
	B		
No.	DATE	DESCRIPTION	

SCALE:	
HOR: 1:100 (A1) 1:200 (A3)	
0m 1 2 4 6 8	
0m	
VER: N/A	
DOCUMENT PURPOSE:	
<input type="checkbox"/> PRELIMINARY ONLY	<input type="checkbox"/> CONSTRUCTION
<input checked="" type="checkbox"/> APPROVAL	<input type="checkbox"/> AS CONSTRUCTED
<input type="checkbox"/> FOR TENDER ONLY	<input type="checkbox"/> OTHER

B.M. No.:	B.M.El.:
DATUM: MGA 54	GDA 2020
SURVEYED: PA JS	FEB '24
DESIGNED: JJ	APR '24
DRAWN: JJ	APR '24
CHECKED: YH	MAY '24
ORIGINAL SHEET SIZE : A1	

IDEAS INTO ACTION

PLANRIGHT

Civil Engineers, Irrigation Designers, Licensed Surveyors.

139 Hogan Street, TATURA Ph. 03 58241322
24B Sydney Street, KILMORE Ph. 03 57822238
21 Nish Street, ECHUCA Ph. 03 54821699

Email: results@planright.com.au

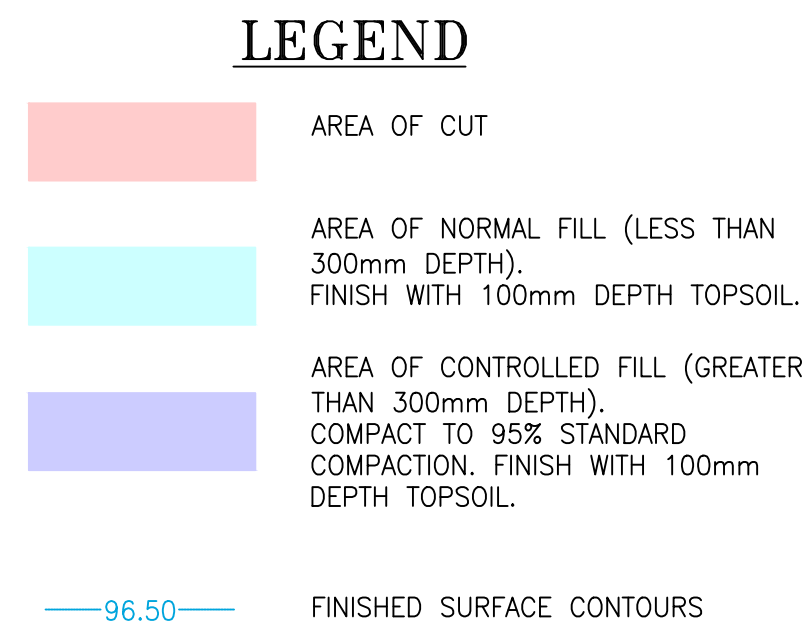
RETAINING WALL WORKS
MURRAY RIVER
SWAN HILL

Setout Plan

CAD: 24010 Murray River Retaining Walls

PLOTTED:

DRAWING No.
24010/6
RELEASE 07
SHEET 6 OF 10



1. ALL EARTHWORKS INVOLVED IN THE FILLING OF ALLOTMENTS SHALL CONFORM TO THE REQUIREMENTS OF AS 3798-2007 "GUIDELINES ON EARTHWORKS FOR COMMERCIAL AND RESIDENTIAL DEVELOPMENTS". THE CONTRACTOR IS TO ENSURE THAT THEY ARE FAMILIAR WITH THE REQUIREMENTS OF AS3798-2007.

IN PARTICULAR, THE CONTRACTOR IS TO TAKE NOTE OF THE FOLLOWING SECTIONS :-
SECTION 3.4 CONSTRUCTION RECORDS.
SECTION 5.5 TEST ROLLING (INCLUDING EXISTING SURFACES ON WHICH FILL IS TO BE PLACED AND THE FINISHED SURFACE.)
SECTION 6.1.7 FOUNDATION PREPARATION
SECTION 7.2 FIELD DENSITY (THE SPECIFIED METHOD IS THE DIRECT METHOD)
SECTION 7.2.2 SAMPLE SELECTION FOR REFERENCE DENSITY (A REFERENCE DENSITY SHALL BE OBTAINED FOR EACH FIELD DETERMINATION)
SECTION 8.2 TESTING & TABLE 8.1 FREQUENCY OF TESTING (TYPE 1 LARGE SCALE OPERATIONS OR TYPE 2 SMALL SCALE OPERATIONS AS APPLICABLE)

THE ABOVE REQUIREMENTS DO NOT APPLY TO FILL DEPTHS OF 300mm OR LESS. IN THESE AREAS THE TOPSOIL SHALL BE STRIPPED AND THE FILL MATERIAL SPREAD, SHAPED TO LEVELS INDICATED, AND LIGHTLY COMPACTED.

WHERE THE DESIGN CALLS FOR GREATER THAN 300mm OF FILL THE CONTRACTOR SHALL PROVIDE GEOTECHNICAL TESTING TO LEVEL 1 AS DESCRIBED IN APPENDIX B OF AS3798 – 2007. THE CONTRACTOR WILL SUPPLY THE REPORT TO THE PRINCIPAL AT THE COMPLETION OF FILLING OPERATIONS.

2. APPROPRIATE STEPS MUST BE TAKEN TO RETAIN ALL SILT AND SEDIMENT ON THE SITE DURING THE CONSTRUCTION PHASE TO THE SATISFACTION OF THE RESPONSIBLE AUTHORITY, IN ACCORDANCE WITH THE SEDIMENT CONTROL PRINCIPLES OUTLINED IN CONSTRUCTION TECHNIQUES FOR SEDIMENT POLLUTION CONTROL (EPA, 1991).

MEASURES SHALL INCLUDE, BUT ARE NOT LIMITED TO, THE SUPPLY AND INSTALLATION OF:
 - GRAVEL FILTERS TO BE GEO-FABRIC ENCLOSED AND PLACED AROUND GRATED PITS. FILTERS SHOULD BE CONSTRUCTED OF A GEOTEXTILE SLEEVE FITTED WITH 25-50mm GRAVEL AND SHOULD BE A MINIMUM OF 150mm IN HEIGHT.
 - STRAW BALES TO BE PLACED IN OPEN DRAIN INVERTS AT 100m INTERVALS.
 - 200mm HIGH BUND WALL SHALL BE CONSTRUCTED ALONG LOT FRONTAGES.SILT CONTROL MEASURES TO BE LEFT IN PLACE FOLLOWING PRACTICAL COMPLETION.
3. 150mm DEPTH TOPSOIL IS TO BE STRIPPED AND PLACED AND LIGHTLY ROLLED FROM EXISTING PATH TO RETAINING WALL BOTTOM TIER AREAS BEING FILLED OR CUT.
4. ALL EARTHWORKS BANKS IN CUT OR FILL TO BE CONTAINED WITHIN BOUNDARIES.
5. ALL WORKS SHOULD BE SUPERVISED BY A SUITABLY EXPERIENCED SUPERINTENDENT. SHOULD A SUPERINTENDENT NOT BE ENGAGED, PLANRIGHT CANNOT GUARANTEE THE QUALITY OF THE FINISHED WORKS.
6. ALL WORKS ARE TO CONFORM TO THE RELEVANT AUSTRALIAN STANDARDS. IT IS THE RESPONSIBILITY OF THE CONTRACTOR TO ENSURE THEY ARE FAMILIAR WITH THE REQUIREMENTS OF THESE STANDARDS.
7. THE CONTRACTOR SHALL TAKE MEASURES NECESSARY TO KEEP AIRBORNE DUST TO A MINIMUM.
8. EXISTING TREES AND THEIR ROOT SYSTEMS TO BE REMOVED FROM SITE AND VOID BACKFILLED WITH STRUCTURAL FILL COMPACTED IN 150mm LAYERS.

MEASURES SHALL INCLUDE, BUT ARE NOT LIMITED TO, THE SUPPLY AND INSTALLATION OF:

- GRAVEL FILTERS TO BE GEO-FABRIC ENCLOSED AND PLACED AROUND GRATED PITS. FILTERS SHOULD BE CONSTRUCTED OF A GEOTEXTILE SLEEVE FITTED WITH 25-50mm GRAVEL AND SHOULD BE A MINIMUM OF 150mm IN HEIGHT.
- STRAW BALES TO BE PLACED IN OPEN DRAIN INVERT AT 100m INTERVALS.
- 200mm HIGH BUND WALL SHALL BE CONSTRUCTED ALONG LOT FRONTPACES.

SILT CONTROL MEASURES TO BE LEFT IN PLACE FOLLOWING PRACTICAL COMPLETION.

150mm DEPTH TOPSOIL IS TO BE STRIPPED AND PLACED AND LIGHTLY ROLLED FROM EXISTING PATH TO RETAINING WALL BOTTOM TIER AREAS BEING FILLED OR CUT.

4. ALL EARTHWORKS BANKS IN CUT OR FILL TO BE CONTAINED WITHIN BOUNDARIES.

5. ALL WORKS SHOULD BE SUPERVISED BY A SUITABLY EXPERIENCED SUPERINTENDENT. SHOULD A SUPERINTENDENT NOT BE ENGAGED, PLANRIGHT CANNOT GUARANTEE THE QUALITY OF THE FINISHED WORKS.

6. ALL WORKS ARE TO CONFORM TO THE RELEVANT AUSTRALIAN STANDARDS. IT IS THE RESPONSIBILITY OF THE CONTRACTOR TO ENSURE THEY ARE FAMILIAR WITH THE REQUIREMENTS OF THESE STANDARDS.

7. THE CONTRACTOR SHALL TAKE MEASURES NECESSARY TO KEEP AIRBORNE DUST TO A MINIMUM.

8. EXISTING TREES AND THEIR ROOT SYSTEMS TO BE REMOVED FROM SITE AND VOID BACKFILLED WITH STRUCTURAL FILL COMPACTED IN 150mm LAYERS.

Notwithstanding any description contained in the Plans or Specification the Contractor shall be responsible for satisfying himself as to the nature and extent of the specified works and the physical and legal conditions under which the works will be carried out, including means of access, extent of clearing, nature of material to be excavated, type and size of mechanical plant required and any like matters effecting the construction of the works.

BEWARE OF ALL SERVICES
The location of all services, where shown, are approximate only. All authorities must be contacted prior to construction to determine the exact location and clearance requirements of all services.



SCALE:

HOR: 1:150 (A1) 1:300 (A3)

0m 1.5 3 6 9 12

0m

VER: N/A

DOCUMENT PURPOSE:

☐ PRELIMINARY ONLY ☐ CONSTRUCTION

☒ APPROVAL ☐ AS CONSTRUCTED

☐ FOR TENDER ONLY ☐ OTHER

SCALE:
HOR: 1:150 (A1) 1:300 (A3)
0m 1.5 3 6 9 12
VER: N/A

B.M. No.:		B.M.El.:	
DATUM: MGA 54		GDA 2020	
SURVEYED: PA JS		FEB '24	
DESIGNED: JJ		APR '24	
DRAWN: JJ		APR '24	
CHECKED: YH		MAY '24	
ORIGINAL SHEET SIZE : A1			

B.M. No.:		B.M.El.:	
DATUM: MGA 54		GDA 2020	
SURVEYED: PA JS		FEB '24	
DESIGNED: JJ		APR '24	



Earthwork Plan

CAD: 24010 Murray River Retaining Walls

PLOTTED:

DRAWING No.	
24010 / 7	
RELEASE 07	
SHEET 7 OF 10	



DISCLAIMER
Notwithstanding any description contained in the Plans or Specification the Contractor shall be responsible for satisfying himself as to the nature and extent of the specified works and the physical and legal conditions under which the works will be carried out, including means of access, extent of clearing, nature of material to be excavated, type and size of mechanical plant required and any like matters affecting the construction of the works.

©INFORMATION CONTAINED ON THIS DRAWING IS THE COPYRIGHT OF PLANRIGHT AUSTRALASIA Pty. Ltd. COPYING OR USING THIS DRAWING IN WHOLE OR PART WITHOUT PERMISSION INFRINGES COPYRIGHT.

WARNING
BEWARE OF ALL SERVICES
The location of all services, where shown, are approximate only. All authorities must be contacted prior to construction to determine the exact location and clearance requirements of all services.

BEFORE YOU DIG
The Essential First Step

RELEASE	H		
	G		
	F		
	E		
	D		
	C		
	B		
No.	DATE	DESCRIPTION	

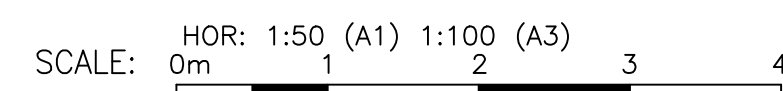
SCALE:	
HOR: 1:250 (A1) 1:500 (A3)	0m 5 10 15 20
VER: N/A	
DOCUMENT PURPOSE:	
<input type="checkbox"/> PRELIMINARY ONLY	<input type="checkbox"/> CONSTRUCTION
<input checked="" type="checkbox"/> APPROVAL	<input type="checkbox"/> AS CONSTRUCTED
<input type="checkbox"/> FOR TENDER ONLY	<input type="checkbox"/> OTHER

B.M. No.:	B.M.EL.:
DATUM: MGA 54	GDA 2020
SURVEYED: PA JS	FEB '24
DESIGNED: JJ	APR '24
DRAWN: JJ	APR '24
CHECKED: YH	MAY '24
ORIGINAL SHEET SIZE : A1	

IDEAS INTO ACTION
PLANRIGHT
Civil Engineers, Irrigation Designers, Licensed Surveyors.
139 Hogan Street, TATURA Ph. 03 58241322
24B Sydney Street, KILMORE Ph. 03 57822238
21 Nish Street, ECHUCA Ph. 03 54821699
Email: results@planright.com.au

RETAINING WALL WORKS MURRAY RIVER SWAN HILL	
Construction Management Plan	
CAD: 24010 Murray River Retaining Walls	PLOTTED:
DRAWING No. 24010/8 RELEASE 07 SHEET 8 OF 10	

SECTION A-A BANK EROSION CONTROL DETAILS



SITE 1 LAYOUT

LEGEND	
	EXISTING SURFACE LEVEL
	EXISTING STOP VALVE
	EXISTING FIRE PLUG
	EXISTING DRAINAGE PIPE
	EXISTING DRAINAGE PIT
	EXISTING TOP OF BANK
	EXISTING TOE OF BANK
	EXISTING FEATURE
	SURFACE LEVEL CONTOUR
	EXISTING TREE
	VEGETATION AREA
	TBM
	EXISTING LIGHT
	EXISTING ELEC PIT
	EXISTING FENCE
	PROPOSED BEACHING
	PROPOSED TOP OF BANK
	PROPOSED TOE OF BANK

DISCLAIMER

Notwithstanding any description contained in the Plans or Specification the Contractor shall be responsible for satisfying himself as to the nature and extent of the specified works and the physical and legal conditions under which the works will be carried out, including means of access, extent of clearing, nature of material to be excavated, type and size of mechanical plant required and any like matters effecting the construction of the works.

WARNING

WARNING
BEWARE OF ALL SERVICES

The location of all services, where shown, are approximate only. All authorities must be contacted prior to construction to determine the exact location and clearance requirements of all services.



RELEASE	H		
	G		
	F		
	E		
	D		
	C		
	B		
	No.	DATE	DESCRIPTION

SCALE:

HOR: 1:150 (A1) 1:300 (A3)

0m 1.5 3 6 9 12

0m

VER: N/A

DOCUMENT PURPOSE:

<input type="checkbox"/> PRELIMINARY ONLY	<input type="checkbox"/> CONSTRUCTION
<input checked="" type="checkbox"/> APPROVAL	<input type="checkbox"/> AS CONSTRUCTED
<input type="checkbox"/> FOR TENDER ONLY	<input type="checkbox"/> OTHER

B.M. No.:		B.M.El.:	
DATUM: MGA 54		GDA 2020	
SURVEYED: PA JS		FEB '24	
DESIGNED: JJ		APR '24	
DRAWN: JJ		APR '24	
CHECKED: YH		MAY '24	
ORIGINAL SHEET SIZE : A1			

IDEAS INTO ACTION
PLANRIGHT

Civil Engineers, Irrigation Designers, Licensed Surveyors.

139 Hogan Street,	TATURA	Ph. 03 58241322
24B Sydney Street,	KILMORE	Ph. 03 57822238
21 Nish Street,	ECHUCA	Ph. 03 54821699

Email: results@planright.com.au

RETAINING WALL WORKS
MURRAY RIVER
SWAN HILL

Site 1 – Details

CAD: 24010 Murray River Bank Erosion Control	PLOTTED:
--	----------

DRAWING No.
24010 / 10
RELEASE 07